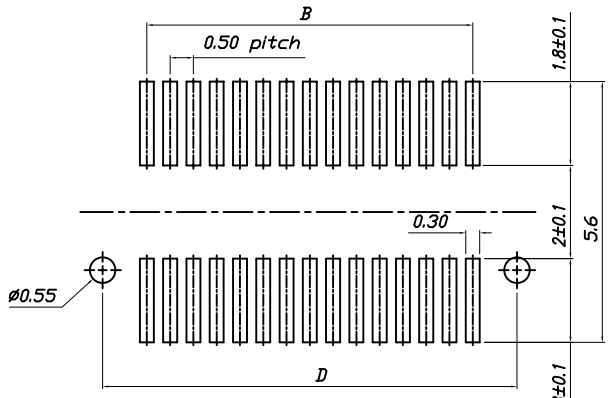
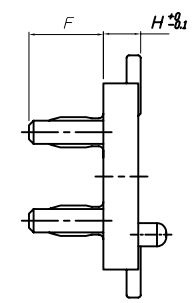
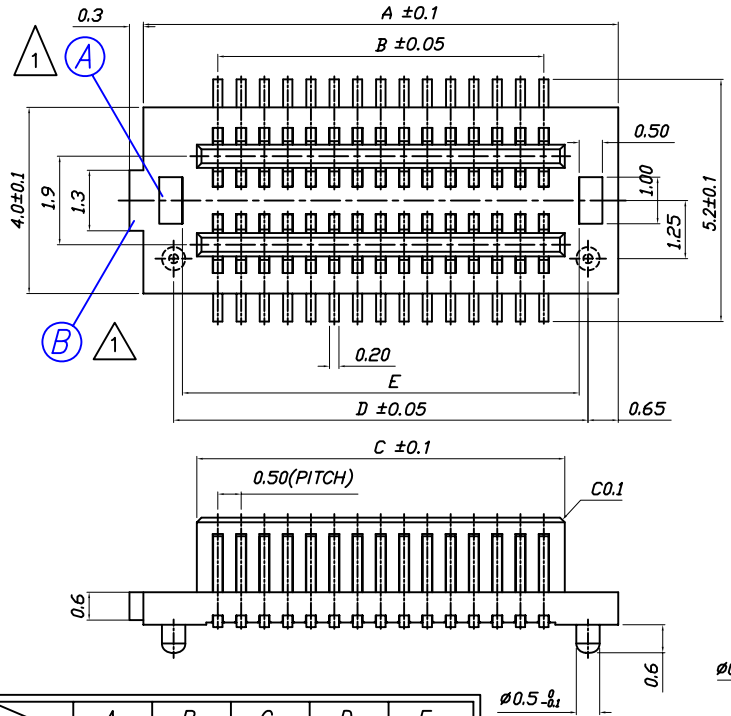


NO	변경 사항	수정 내용	비고	수정 일시	승인	일시
①	2개소 형상 변경	변경점 통보서에 의거		2012.05.08	C.W.D	2012.05.08
②						
③						

HIGH	PLUG	SOCKET	F
3.0	0.8	2.2	1.6
3.5	1.3	2.2	1.6
4.0	1.0	3.0	1.9
4.5	1.0	3.5	1.9
5.0	1.0	4.0	1.9
5.5	1.0	4.5	1.9
6.0	2.0	4.0	1.9
6.5	2.0	4.5	1.9



	A	B	C	D	E
08P	4.70	1.50	2.40	3.40	3.02
10P	5.20	2.00	2.90	3.90	3.52
12P	5.70	2.50	3.40	4.40	4.02
14P	6.20	3.00	3.90	4.90	4.52
16P	6.70	3.50	4.40	5.40	5.02
18P	7.20	4.00	4.90	5.90	5.52
20P	7.70	4.50	5.40	6.40	6.02
22P	8.20	5.00	5.90	6.90	6.52
24P	8.70	5.50	6.40	7.40	7.02
26P	9.20	6.00	6.90	7.90	7.52
28P	9.70	6.50	7.40	8.40	8.02
30P	10.20	7.00	7.90	8.90	8.52
32P	10.70	7.50	8.40	9.40	9.02
34P	11.20	8.00	8.90	9.90	9.52

	A	B	C	D	E
36P	11.70	8.50	9.40	10.40	10.02
38P	12.20	9.00	9.90	10.90	10.52
40P	12.70	9.50	10.40	11.40	11.02
42P	13.20	10.00	10.90	11.90	11.52
44P	13.70	10.50	11.40	12.40	12.02
46P	14.20	11.00	11.90	12.90	12.52
48P	14.70	11.50	12.40	13.40	13.02
50P	15.20	12.00	12.90	13.90	13.52
60P	17.70	14.50	15.50	16.40	16.02
70P	20.20	17.00	18.00	18.90	18.52
80P	22.70	19.50	20.50	21.40	21.02
90P	25.20	22.00	23.00	23.90	23.52
100P	27.70	24.50	25.50	26.40	26.02

KAPON KAPON TECHNOLOGY CO., LTD

Min:0.03 $\mu$ m Gold plating over Min:1.2 $\mu$ m Nickel

DRAWG NO	PART NAME	MATERIAL	QUANTITY	SPECIFICATION	TREATMENT	REFERENCE
	PLUG	PA 6T		C5210R-SH : NO.2(phosphor bronze)		
		THROUGH-PROJECTION	UNIT mm	SCALE 1/5	TOLERANCE X.XX±0.05	WK NAME NO.5mm PLUG-LK
		APPROVAL	CHECK	DESIGN	DRAW	PART NAME 0.5mm BOARD TO BOARD
		MARK	DATE	REVISION	SIGN	DRAWG NO.

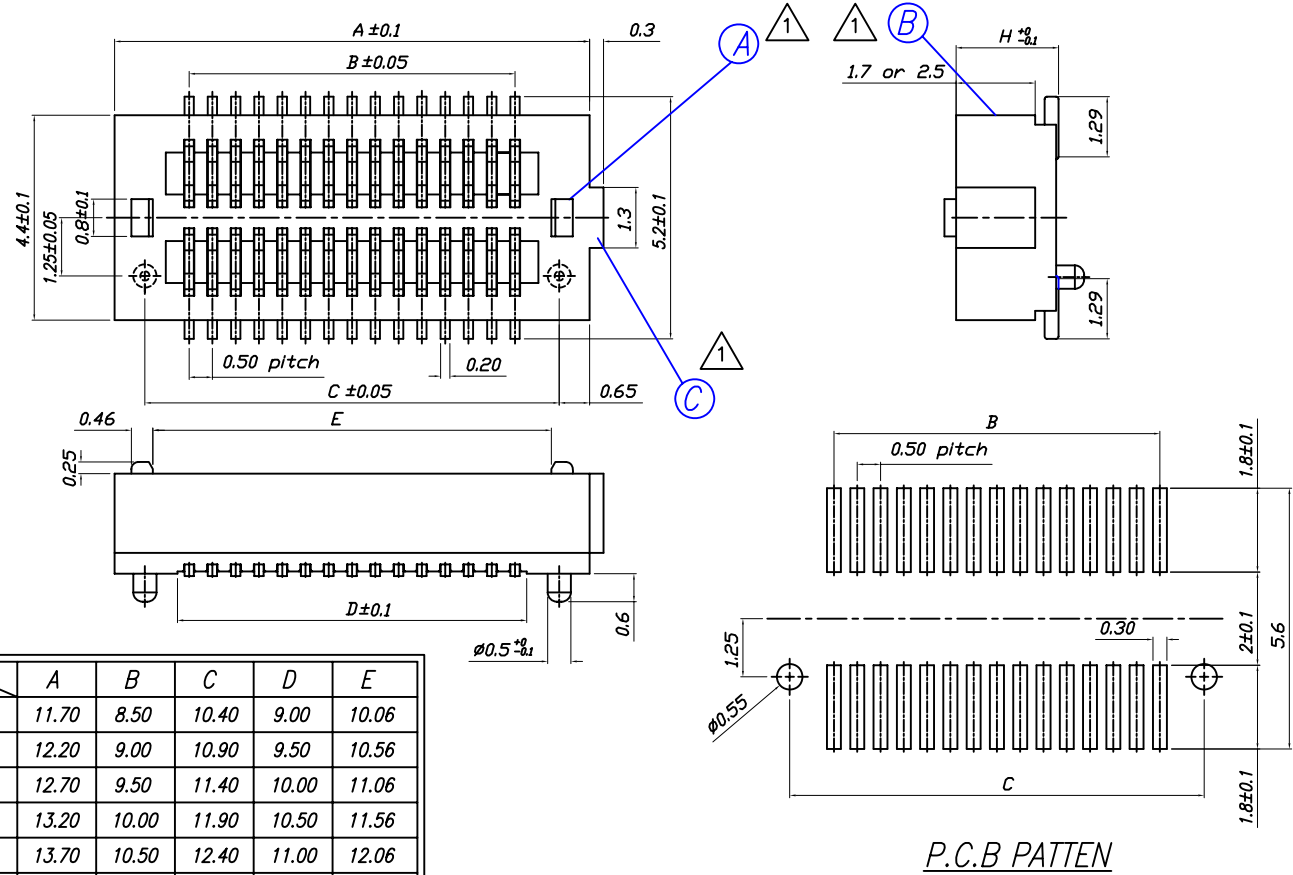


NO	변경 사항	수정 내용	비고	수정	일시	승인	일시
①	3개소 형상 변경	변경점 통보서에 의거		2012.05.08	2012.05.08	C.W.D	2012.05.09
②							
③							

HIGH	SOCKET(H)	PLUG(H)
3.0	2.2	0.8
3.5	2.2	1.3
4.0	3.0	1.0
4.5	3.5	1.0
5.0	4.0	1.0
5.5	4.5	1.0
6.0	4.0	2.0
6.5	4.5	2.0

	A	B	C	D	E
08P	4.70	1.50	3.40	2.00	3.06
10P	5.20	2.00	3.90	2.50	3.56
12P	5.70	2.50	4.40	3.00	4.06
14P	6.20	3.00	4.90	3.50	4.56
16P	6.70	3.50	5.40	4.00	5.06
18P	7.20	4.00	5.90	4.50	5.56
20P	7.70	4.50	6.40	5.00	6.06
22P	8.20	5.00	6.90	5.50	6.56
24P	8.70	5.50	7.40	6.00	7.06
26P	9.20	6.00	7.90	6.50	7.56
28P	9.70	6.50	8.40	7.00	8.06
30P	10.20	7.00	8.90	7.50	8.56
32P	10.70	7.50	9.40	8.00	9.06
34P	11.20	8.00	9.90	8.50	9.56

	A	B	C	D	E
36P	11.70	8.50	10.40	9.00	10.06
38P	12.20	9.00	10.90	9.50	10.56
40P	12.70	9.50	11.40	10.00	11.06
42P	13.20	10.00	11.90	10.50	11.56
44P	13.70	10.50	12.40	11.00	12.06
46P	14.20	11.00	12.90	11.50	12.56
48P	14.70	11.50	13.40	12.00	13.06
50P	15.20	12.00	13.90	12.50	13.56
60P	17.70	14.50	16.40	15.00	16.06
70P	20.20	17.00	18.90	17.50	18.56
80P	22.70	19.50	21.40	20.00	21.06
90P	25.20	22.00	23.90	22.50	23.56
100P	27.70	24.50	26.40	25.00	26.06



KAPON KAPON TECHNOLOGY CO., LTD Min:0.03 $\mu$ m Gold plating over Min:1.2 $\mu$ m Nickel

DRAW NO	PART NAME	MATERIAL	QUANTITY	SPECIFICATION	TREATMENT	REFERENCE
	SOCKET	PA 6T		CS210R-SH : #0.2(phosphor bronze)		
		THROUGH HOLE PROJECTION	UNIT mm	SCALE		
		APPROVAL	CHECK	DESIGN		
				TOLERANCE x20±0.05		
				DRAW		
MARK	DATE	REVISION	SIGN			

WK NAME: NO.5mm SOCKET-LK

PART NAME: 0.5mm BOARD TO BOARD

DRAWG NO.: