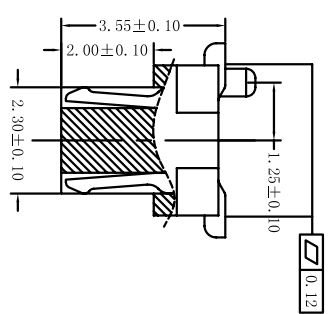


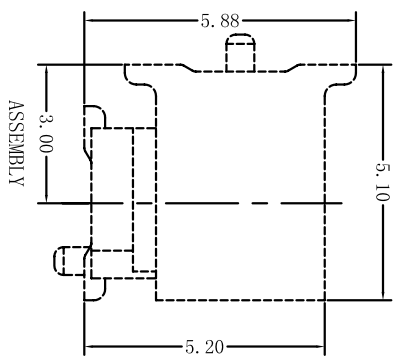
REVNO	REVISION NOTE	DATE	SIGNATURE	CHECKED
A/0	RELEASED	05/11/14	黃得進	

**Notes:**

- Electrical**
- Voltage: 50V AC(RMS)/DC
- Current: 0.5A AC(RMS)/DC
- Contact Resistance: 90mΩ max
- Insulation Resistance: 500MΩ min
- Dielectric Withstanding Voltage: 150VAC/RMS
- Operating Temp: -20°C ~ +85°C
- Materials**
- Housing: High temperature Plastic
- UL 94V-0
- Terminal: Copper Alloy



SECTION: E-E



No of Contacts	Dimensions			
	A	B	C	D
10 (2*5)	5.7	4.8	3.2	4.9
12 (2*6)	6.5	5.6	4.0	5.7
14 (2*7)	7.3	6.4	4.8	6.5
16 (2*8)	8.1	7.2	5.6	7.3
18 (2*9)	8.9	8.0	6.4	8.1
20 (2*10)	9.7	8.8	7.2	8.9
22 (2*11)	10.5	9.6	8.0	9.7
24 (2*12)	11.3	10.4	8.8	10.5
26 (2*13)	12.1	11.2	9.6	11.3
28 (2*14)	12.9	12.0	10.4	12.1
30 (2*15)	13.7	12.8	11.2	12.9
32 (2*16)	14.5	13.6	12.0	13.7
40 (2*20)	17.7	16.8	15.2	16.9
50 (2*25)	21.7	20.8	19.2	20.9

ITEM REF	QUANTITY:	SEE NOTES	PART NUMBER:
DESIGNED	06/01/12	CHECKED	50308031022XX
Kav:in		APPROVED	UNIT
			mm
			SCALE
			1:1

ITEM: 0.8mm B70B侧插型公座 (普通导柱)

DRAWING NUMBER: A/1

EDITION: 1/1

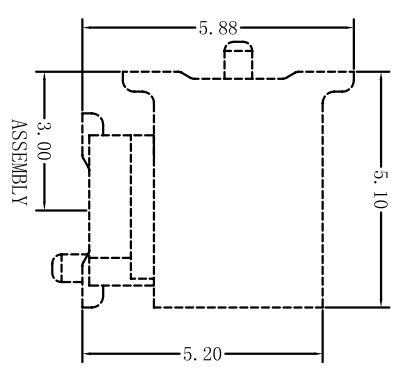
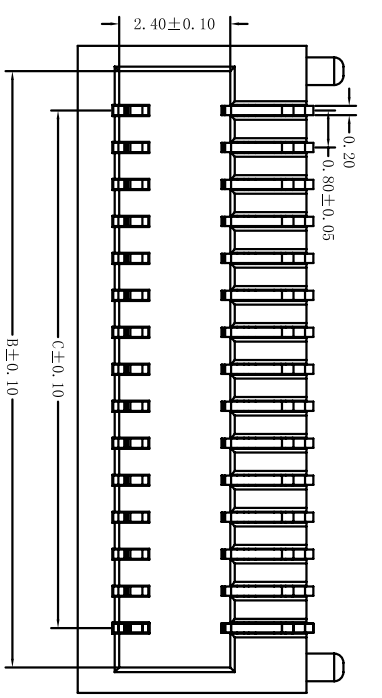
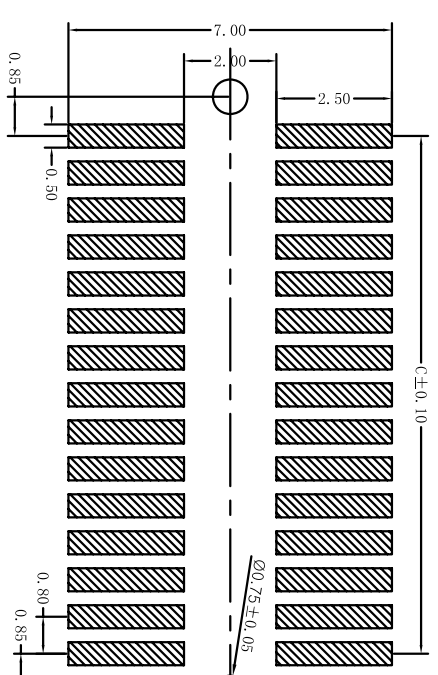
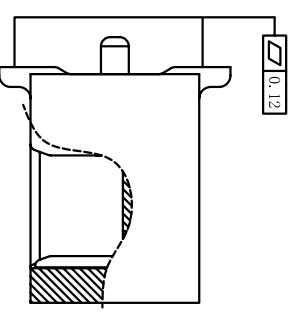
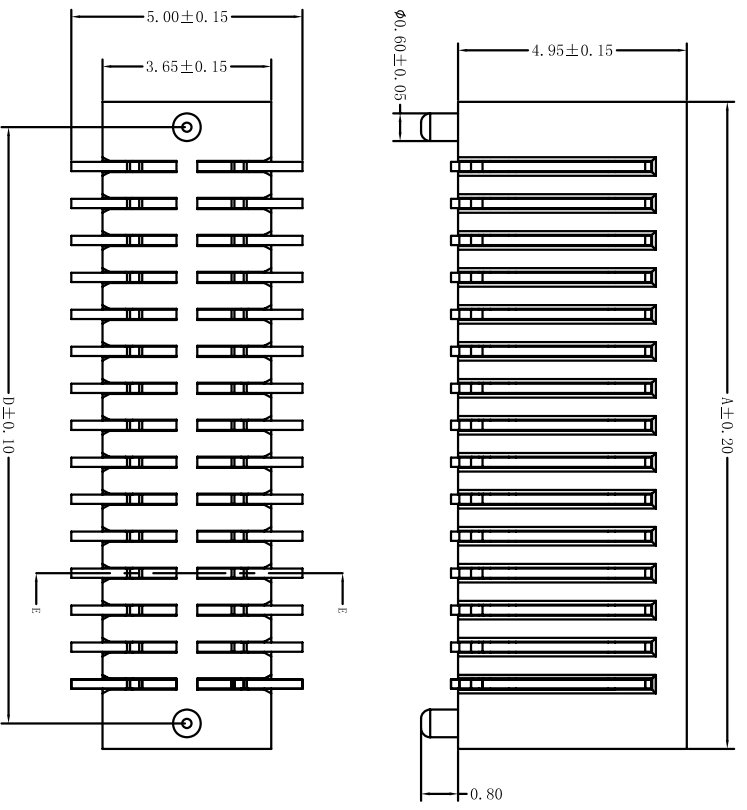
SHEET: 1/1

KAPON深圳市卡邦科技有限公司

REVNO	REVISION NOTE	DATE	SIGNATURE	CHECKED
A/0	RELEASED	06/01/12	黃得進	

Notes:

**Electrical**  
Voltage:50V AC(RMS)/DC  
Current:0.5A AC(RMS)/DC  
Contact Resistance:90m Ω max  
Insulation Resistance:5000M Ω min  
Dielectric Withstanding  
Voltage:150V AC/RMS  
Operating Temp:-20℃~+85℃  
**Materials**  
Housing:High temperature Plastic  
UL 94V-0  
Terminal:Copper Alloy



No. of Contacts	Dimensions			
	A	B	C	D
10 (2*5)	6.0	4.9	3.2	4.9
12 (2*6)	6.8	5.7	4.0	5.7
14 (2*7)	7.6	6.5	4.8	6.5
16 (2*8)	8.4	7.3	5.6	7.3
18 (2*9)	9.2	8.1	6.4	8.1
20 (2*10)	10.0	8.9	7.2	8.9
22 (2*11)	10.8	9.7	8.0	9.7
24 (2*12)	11.6	10.5	8.8	10.5
26 (2*13)	12.4	11.3	9.6	11.3
28 (2*14)	13.2	12.1	10.4	12.1
30 (2*15)	14.0	12.9	11.2	12.9
32 (2*16)	14.8	13.7	12.0	13.7
40 (2*20)	18.0	16.9	15.2	17.9
50 (2*25)	22.0	20.9	19.2	20.9

ITEM REF	QUANTITY	SEE NOTES	PART NUMBER	50308032023XX
DESIGNED	06/01/12	CHECKED	APPROVED	
Kav:in				

0.8mm B10B侧插型母座(导柱中)  
DRAWING NUMBER  
EDITION A/3  
SCALE 1:1

KAPON深圳市卡邦科技有限公司

