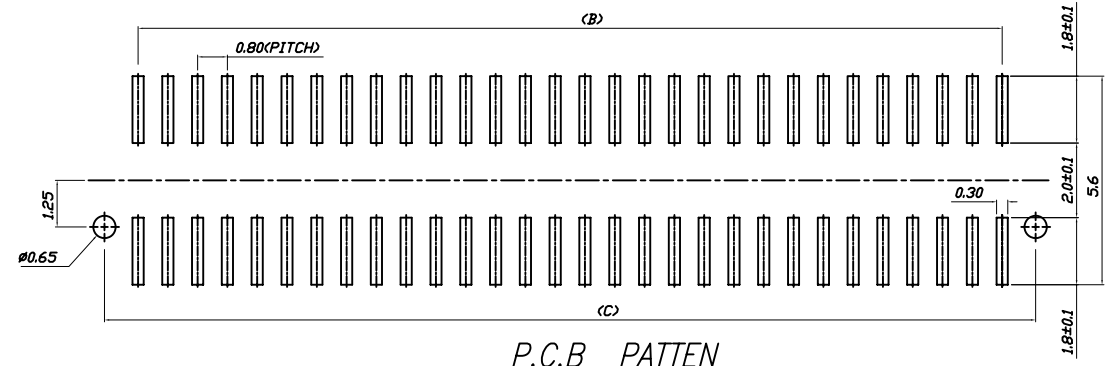
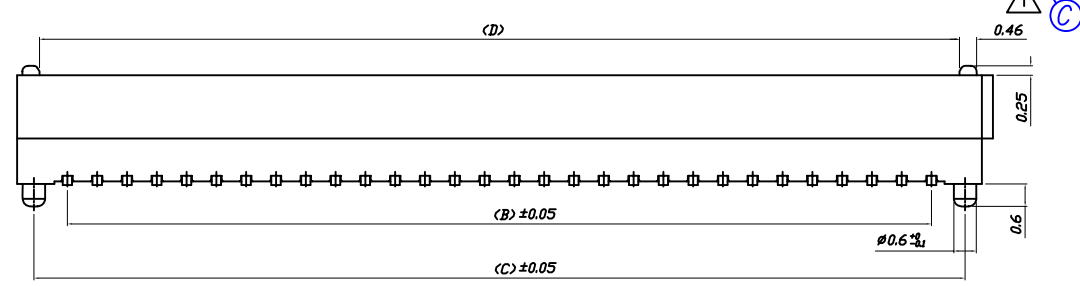
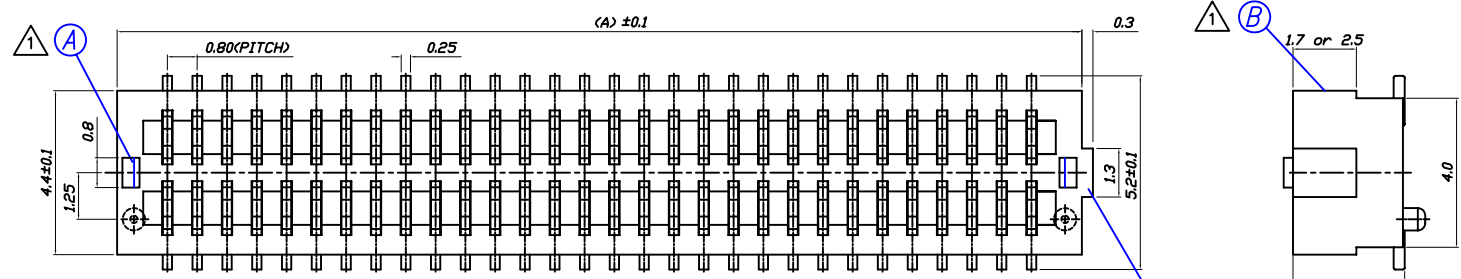


NO	변경 사항	수정 내용	비고	수정 일시	승인	일시
1	3개소 형상 변경	변경점 통보서에 의거		2012.05.08	C.W.D	2012.05.08
2						
3						



HIGH	SOCKET(H)	PLUG(H)
4.0	3.0	1.0
4.5	3.5	1.0
5.0	4.0	1.0
5.5	4.5	1.0
6.0	4.0	2.0
6.5	4.5	2.0

	A	B	C	D		A	B	C	D
8P	5.1	2.4	4.2	3.9	34P	15.5	12.8	14.6	14.3
10P	5.9	3.2	5.0	4.7	36P	16.3	13.6	15.4	15.1
12P	6.7	4.0	5.8	5.1	38P	17.1	14.4	16.2	15.9
14P	7.5	4.8	6.6	6.3	40P	17.9	15.2	17.0	16.7
16P	8.3	5.6	7.4	7.1	42P	18.7	16.0	17.8	17.5
18P	9.1	6.4	8.2	7.9	44P	19.5	16.8	18.6	18.3
20P	9.9	7.2	9.0	8.7	46P	20.3	17.6	19.4	19.1
22P	10.7	8.0	9.8	9.5	48P	21.1	18.4	20.2	19.9
24P	11.5	8.8	10.6	10.3	50P	21.9	19.2	21.0	20.7
26P	12.3	9.6	11.4	11.1	60P	25.9	23.2	25.0	24.7
28P	13.1	10.4	12.2	11.9	70P	29.9	27.2	29.0	28.7
30P	13.9	11.2	13.0	12.7	80P	33.9	31.2	33.0	32.7
32P	14.7	12.0	13.8	13.5	100P	41.9	39.2	41.0	40.7

P.C.B PATTEN

KAPON KAPON TECHNOLOGY CO., LTD Min:0.03 $\mu$ m Gold plating over Min:1.2 $\mu$ m Nickel

DRAW NO	PART NAME	MATERIAL	QUANTITY	SPECIFICATION	TREATMENT	REFERENCE
	SOCKET	PA 6T		CS210R-SH : 10.25		
		THROUGH PROJECTION	UNIT mm	SCALE	TOLERANCE	W.K. NAME
		APPROVAL	CHECK	DESIGN	DRAW	NO.8mm SOCKET-LK
						PART NAME
						0.8mm BOARD TO BOARD
						DRAW NO.
MARK	DATE	REVISION	SIGN			