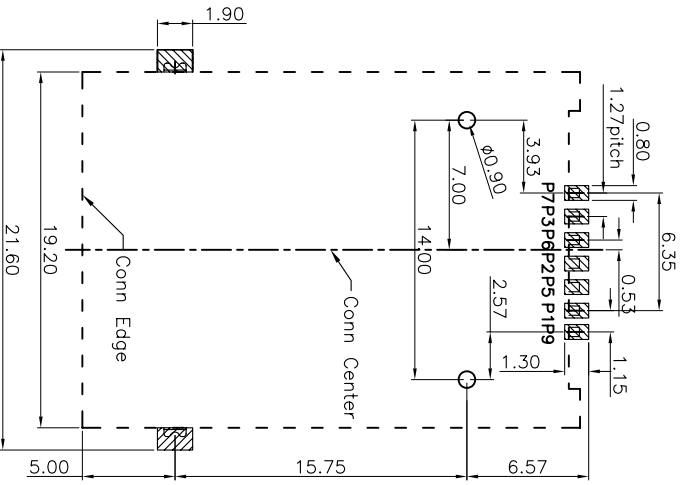
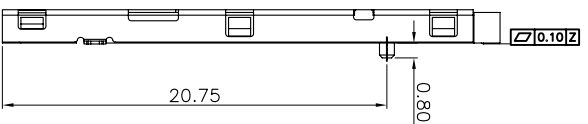
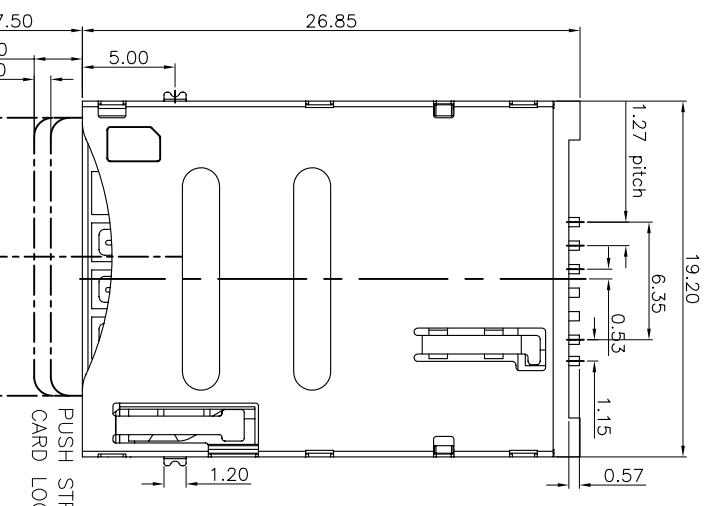


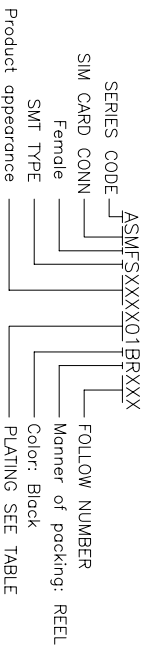
REV.	ECONO.	MODIFY/CONTENT	DATE
A		NEW	2012/12/31



Specification:

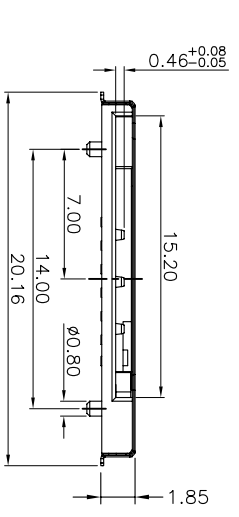
- \*Electrical Characteristics:
- Current Rating:0.5A
- Withstanding Voltage:AC500V r.m.s.
- Insulation Resistance:1000Megaohms Minimum at DC 500V
- Contact Resistance:100MiliOhms Maximum.
- \*Mechanical Characteristics:
- Mating Cycles:5000 Insertions.

PART NUMBER INFORMATION :

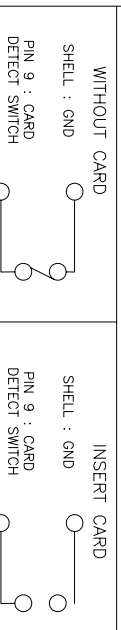


CONNECTOR TERMINAL NO

CONNECTOR TERMINAL NO	PIN NO
PIN 1	VCC:PWR SIGNAL AND GND
PIN 2	RST:RESET SIGNAL
PIN 3	CLK:CLOCKING SIGNAL
PIN 5	GND:PWR SIGNAL AND GND
PIN 6	VPP:PROGRAMMING VOLTAGE
PIN 7	I/O:SERIAL DATA INPUT/OUTPUT



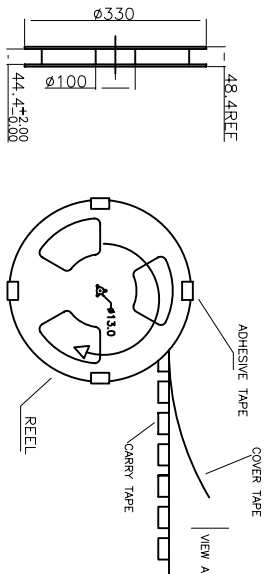
Circuit Diagram for Card Detect Switch



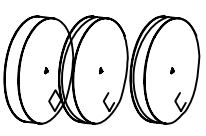
GENERAL TOLERANCE	DWG NO.	Part NO.
X:±0.25	X:±5'	
X±0.20	X'±2'	Title
.XX±0.15	.XX'±1'	
.XXX±0.08	.xxx'±0.5'	
SHEET	1/1	

APPD:	WIND	Scale
LZA0517-001		1:1
CHKD:		UNIT
DR:		mm
Date	2012/12/31	

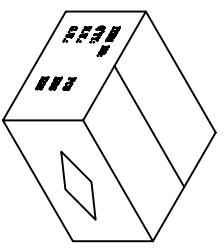
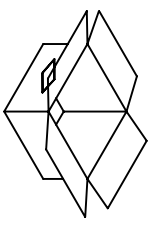
深圳市卡邦科技有限公司



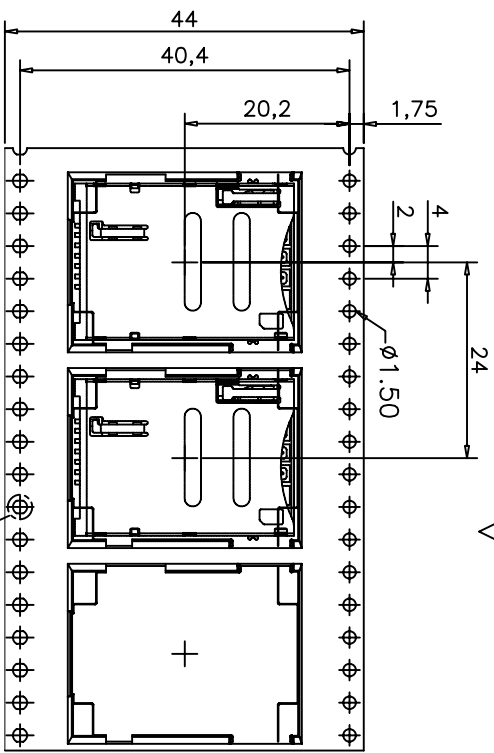
对应三视图



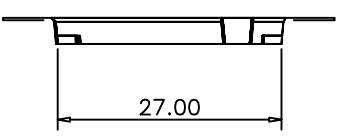
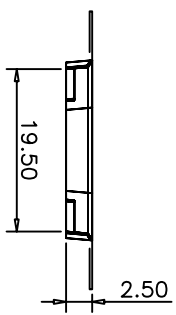
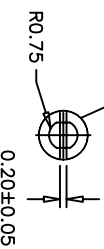
每箱装7盘, 依次叠在一起 (图一)



封箱, 填写相关内容 (图二)



图三



NOTE:

1. CARRY TAPE (黑色) 前部分与尾部分各留出150~300mm长度不装产品
2. 每穴放置1PCS产品, 放置方式如图所示
3. 包装机包好后, 在REEL的个等分点上胶带, 以防止REEL张开, 每REEL贴1PCS标签
4. 包装数量: 750PCS/REEL, 7REEL/CARTON, 5250PCS/CARTON
5. 依次将产品放入箱内, 共放7盘 (图一)
6. 封箱, 在封好的纸箱上按客户要求写上料号, 数量等 (图二)
7. 顺向出料, 单孔朝外。
8. 顺向出料, 双孔按图三

GENERAL TOLERANCE		DWG NO.	LZA0519-018	APPD:	WIND	Scale	1:1
X.±0.45	X.±1°	Title	SIM CARD SMT TYPE	CHKD:		UNIT	mm
X±0.35	X±2°		PUSH 6+1包装图	DR:			
.XX±0.25	.X±1°	Part NO.		Date	2012/04/13		
.XXX±0.15	.xxx±0.5°						
SHEET	1/1						

深圳市卡邦科技有限公司

REV.	EQN. NO.	MODIFY CONTENT	DATE
A		NEW	2012/04/13