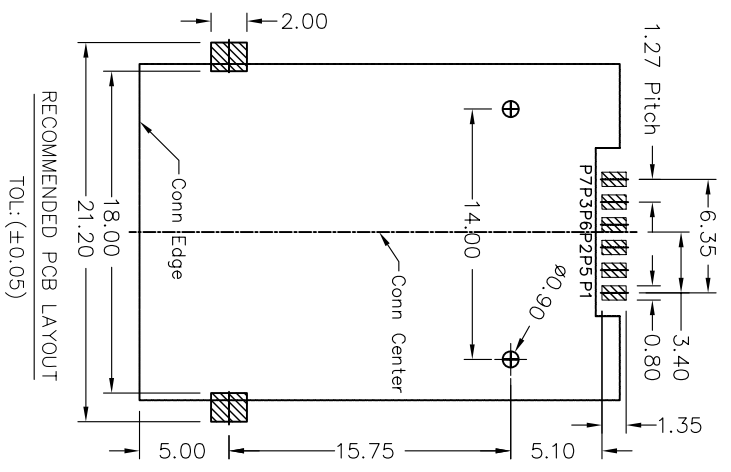
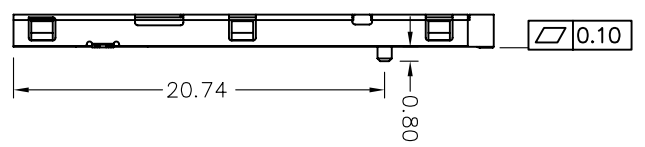
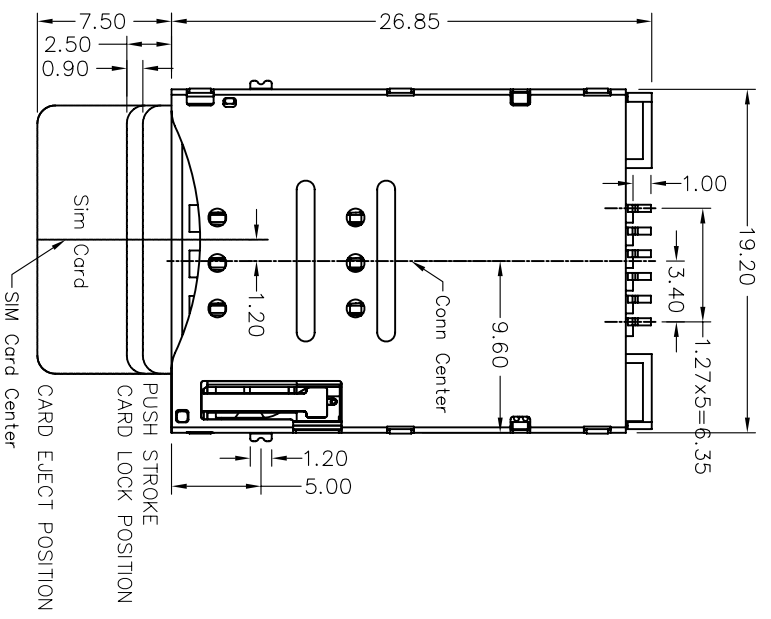
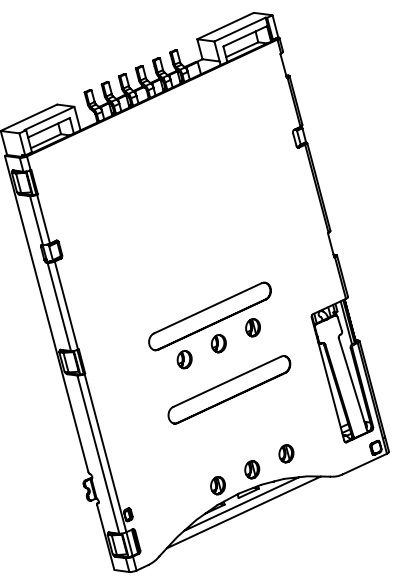


REV.	EQN. NO.	MODIFY CONTENT	DATE
A		NEW	2011/10/31



RECOMMENDED PCB LAYOUT
TOL: (± 0.05)



Specification:
 *Electrical Characteristics:
 Current Rating:0.5A.
 Withstanding Voltage:AC500V r.m.s.
 Insulation Resistance:1000Mmegohms Minimum at DC 500V
 Contact Resistance:100Mmilliohms Maximum.
 *Mechanical Characteristics:
 Mating Cycles: 3000 Insertions.
 *Environmental:
 Operating Temperature: -40°To+60°

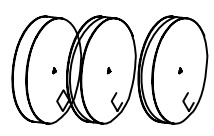
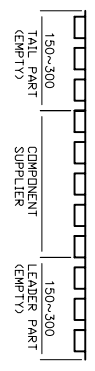
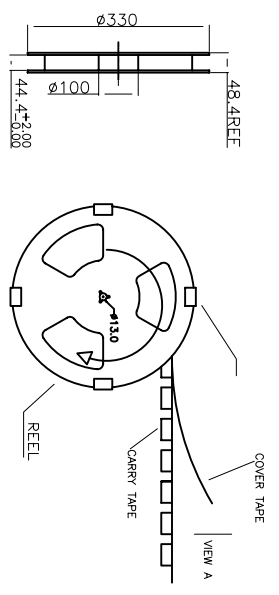
PART NUMBER INFORMATION :

SERIES CODE ASMF5XXXXX01BRXXX
 SIM CARD CONN Female
 SMT TYPE
 Product appearance

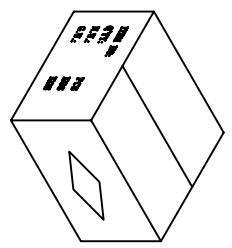
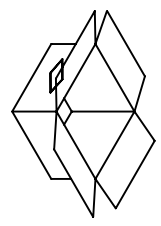
FOLLOW NUMBER
 Manner of packing: REEL
 Color: Black
 PLATING SEE TABLE

GENERAL TOLERANCE		DWG NO.	LZA0423-01		APPD:	WIND	Scale	
X.±0.45	X.±5°	Title	SIM CARD PUSH PUSH WITH POST		CHKD:		1:1	
.XX±0.35	.X±2°	Part NO.	ASMF5180B01BR008		DR:		mm	
.XX±0.25	.XX±1°				Date	2012/02/29		
.XXX±0.15	.xxx±0.5°							
SHEET	1/1	KAPN深圳市卡邦科技有限公司						

REV.	EQN. NO.	MODIFY CONTENT	DATE
A		NEW	2012/04/13

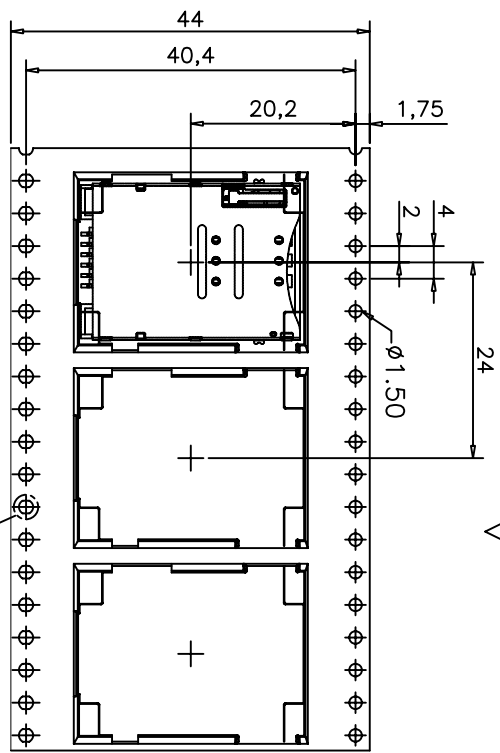


每箱装7盘, 依次叠在一起 (图一)

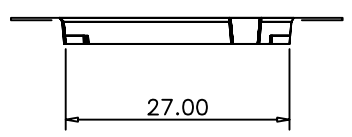
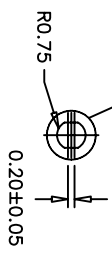


封箱, 填写相关内容 (图二)

对应三视图



图三



NOTE:

1. CARRY TAPE (黑色) 前部分与尾部分各留出150~300mm长度不装产品
2. 每穴放置1PCS产品, 放置方式如图所示
3. 包装机包好后, 在REEL的个等分点上贴胶带, 以防止REEL张开, 每REEL贴1PCS标签
4. 包装数量: 750PCS/REEL, 7REEL/CARTON, 5250PCS/CARTON
5. 依次将产品放入箱内, 共放7盘 (图一)
6. 封箱, 在封好的纸箱上按客户要求写上料号, 数量等 (图二)
7. 顺向出料, 单孔朝外。
8. 顺向出料, 双孔按图三

GENERAL TOLERANCE		DWG NO.	LZA0519-017	APPD:	WIND	Scale	1:1
X.±0.45	x.±1°	Title	SIM CARD SMT TYPE	CHKD:		UNIT	mm
X±0.35	X±2°		PUSH PUSH 包装图	DR:			
.XX±0.25	.X±1°	Part NO.		Date	2012/04/13		
.XXX±0.15	.xxx±0.5°						
SHEET	1/1						

东莞市宝科电子有限公司